

2025 Title 24 Part 6, Submetering Requirements

Energy
Monitoring and
Management
with VerifEye®
Series 7000
Meters

Accessible metering of total electrical use from whole building to branch circuit with VerifEye® Series 7000 Meters.

2025 Title 24, Part 6 requires building owners and facility managers to identify how energy is being used by tracking and analyzing the effectiveness of code compliance efforts. The VerifEye Series 7000 Meters and Building Manager Online offer a cost effective solution for meeting energy code requirements for electrical load management.



CHALLENGE

State energy code requires building owners and facility managers to monitor electrical loads and total energy usage in a facility.

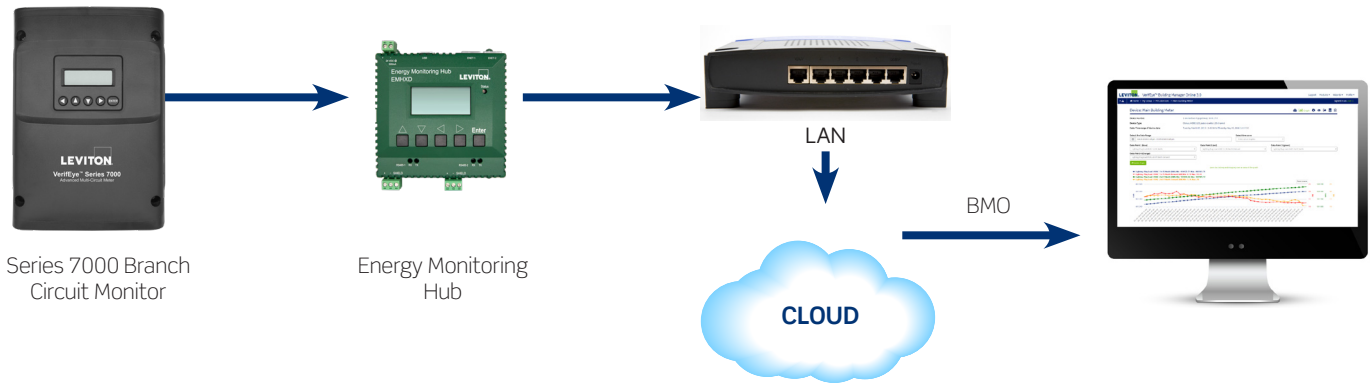
- Solution can be used to meet 2025 Title 24, Part 6 service separation of electrical circuits for electrical monitoring requirements
- Energy metering for energy efficiencies is required for all new and major retrofit projects
- Code requires data management system capable of storing energy data and creating reports for hourly, daily, monthly and annual energy consumption for each major energy system

SOLUTION




VerifEye Series 7000 Advanced Branch Circuit Monitor's modular design is configured for monitoring multiple electrical circuits.

- Can be used to meet 2025 Title 24, Part 6 service separation of electrical circuits for electrical monitoring requirements
- Easy-to-install retrofit application requires minimal wiring during installation while saving time and reducing labor cost
- Building Manager Online software enables users to meet code and compliance requirements for data storage, reporting, and display

VERIFEYE SERIES 7000 ADVANCED BRANCH CIRCUIT MONITOR— 2025 TITLE 24, PART 6 SUBMETERING REQUIREMENTS



WHAT YOU WILL NEED

VERIFEYE SERIES 7000 ADVANCED BRANCH CIRCUIT MONITOR—TITLE 24, PART 6 CODE SUBMETERING REQUIREMENTS		QTY
	VeriEye Series 7000 Branch Circuit Monitor 71D48-000 71D12-000 Monitors current, voltage, demand and energy consumption of each circuit in a panelboard	Varies
	Energy Monitoring Hub EMHXD Benchmarks building energy usage and view "real-time" performance data	Typically 1 per site
	VeriEye Building Manager Online (BMO) BMOBM-x50 Provides the Measurement and Verification (M&V) tools necessary for submetering	Varies

Visit our website at: www.leviton.com/verifeye

© 2025 Leviton Manufacturing Co. Inc. All rights reserved. Subject to change without notice.

LES-G-10392B/F25-mm
REV JUN 2025

