

# ASHRAE 90.1- 2013/2016/2019/2022 and IECC 2021 Submetering Requirements

Energy  
Monitoring and  
Management  
with VerifEye®  
Series 7000  
Meters

## Accessible metering of total electrical use from whole building to branch circuit with VerifEye® Series 7000 Meters.

ASHRAE 90.1-2013/2016/2019/2022 and IECC 2021 requires building owners and facility managers to identify how energy is used by tracking and analyzing the effectiveness of code compliance efforts. The VerifEye Series 7000 Meters and Building Manager Online (BMO) offer a cost effective solution for meeting energy code requirements for electrical load management.



### CHALLENGE

*State energy code requires building owners and facility managers to monitor electrical loads and total energy usage in a facility.*

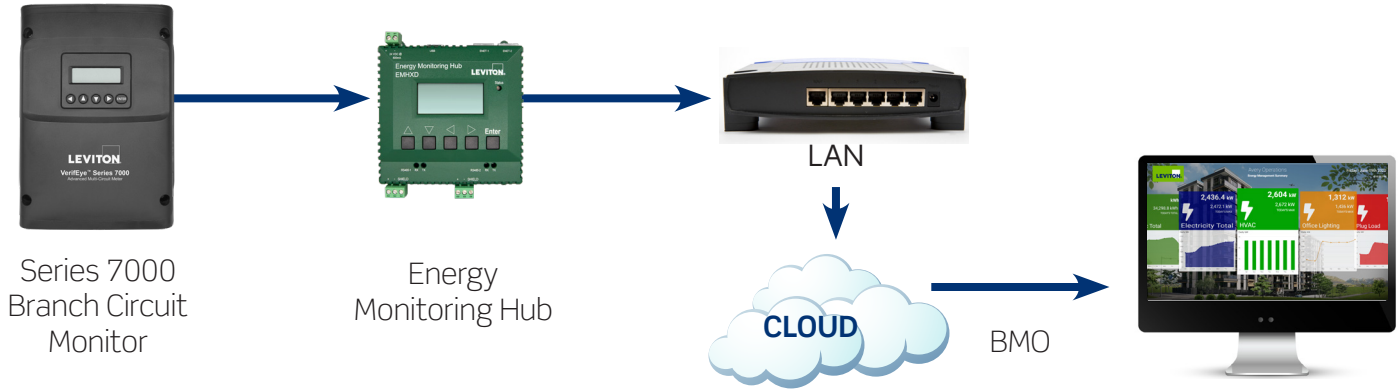
- Solution must be used to meet ASHRAE 90.1-2013/2016/2019/2022 and IECC 2021 submetering requirements
- Energy metering for energy efficiencies is required for all new and major retrofit projects
- Code requires data management system capable of storing energy data and creating reports for hourly, daily, monthly and annual energy consumption for each major load type

### SOLUTION





*VerifEye Series 7000 Advanced Branch Circuit Monitor's modular design is configured for monitoring multiple electrical circuits.*

- Can be used to comply with ASHRAE 90.1-2013/2016/2019/2022 and IECC 2021 submetering requirements
- Easy-to-install retrofit application requires minimal wiring during installation while saving time and reducing labor cost
- Building Manager Online software enables users to meet code compliance requirements for data storage, reporting, and display

# VERIFEYE SERIES 7000 ADVANCED BRANCH CIRCUIT MONITOR — ASHRAE 90.1-2013/2016/2019/2022 AND IECC 2021 SUBMETERING REQUIREMENTS



## WHAT YOU WILL NEED

VERIFEYE SERIES 7000 ADVANCED BRANCH CIRCUIT MONITOR—CODE REQUIREMENTS		QTY
	<b>VeriEye Series 7000 Branch Circuit Monitor   71D48   71D24   71D12   71D03</b> Monitors current, voltage, demand and energy consumption of each circuit in a panelboard	Varies
	<b>Energy Monitoring Hub   EMHXD</b> Benchmarks building energy usage and view "real-time" performance data	Typically 1 per site
	<b>Current Transformers   CDVxx   CTVxx   CRV50</b> Used for accurate measurement of electrical and power consumption circuits	Varies
	<b>VeriEye Building Manager Online (BMO)   BMOBM   BMOAR</b> Allows end users to meet the growing list of code reporting requirements	

Visit our website at: [www.leviton.com/verifeye](http://www.leviton.com/verifeye)

© 2025 Leviton Manufacturing Co. Inc. All rights reserved. Subject to change without notice.

G-10524C/F25-mm

REV JUN 2025

